



## Dimensions

Height	1 700 mm
Width	1 712 mm
Length	2 466 mm
Approx Weight	2 595 kg
Motor Power	30kW
Main Shaft Speed	83r/min
Rotor-knive	42+4 pcs

## Cutting Chamber

Length	1 200 mm
Width	800 mm

## Features

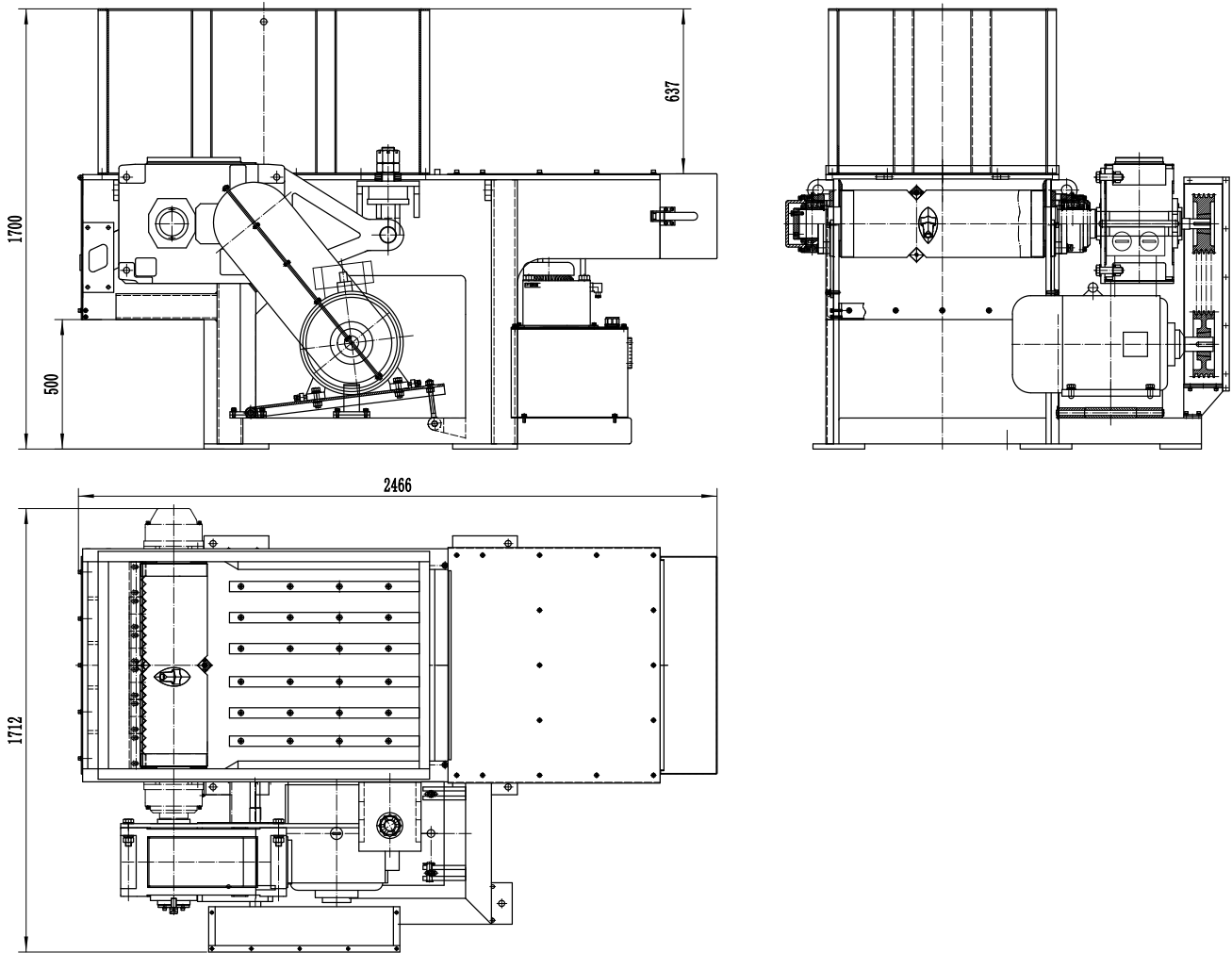
- Pusher ram introducing the material to the cutting rotor
- Hardened steel rotor knives
- Integrated shock absorbers
- Material sizing screens
- Built in hydraulic power pack
- Suitable for Cardboard, Plastic, Paper, Timber and Cans
- Auto Reverse Protection
- Easy Maintenance
- Reliable & Durable Construction

## Optional Extras

- Additional Force Feeding Ram
- Film Rotor
- Hard Material Rotor
- Custom Hopper Designs
- In-Feed and Out Feed Conveyors
- Elevated work and loading platforms



Dimensions and technical information without obligation. Subject to change.



Size Comparison



**Shaft Speed**  
83 (r/min)



**Rotor Knife**  
42 +4 (pcs)



**Motor**  
30kW



**Waste Types**  
Cardboard, Plastic  
Film, Wood, Paper,  
Cans, E-Waste, RDF ...

