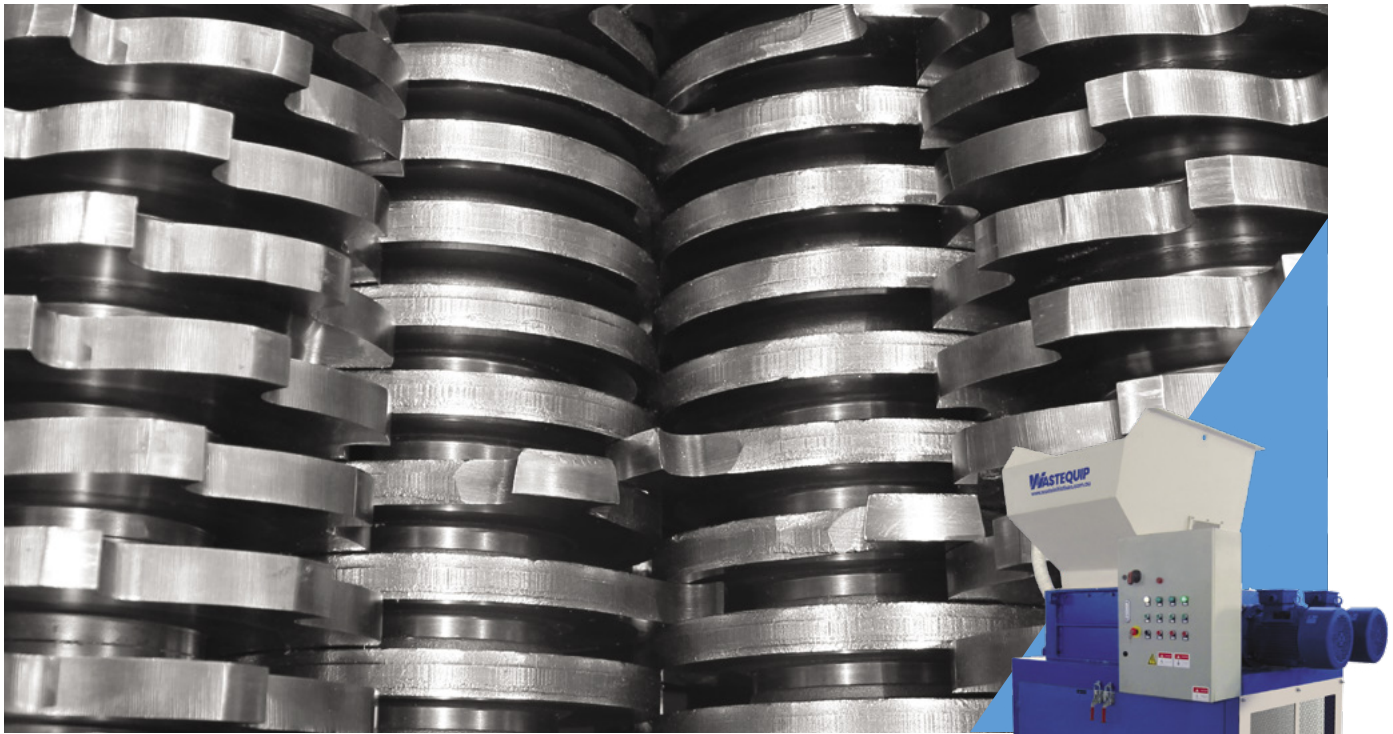




FS SERIES FOUR SHAFT SHREDDERS





FS SERIES **FOUR SHAFT SHREDDERS**

The FS Series four shaft shredders are heavy duty machines designed for industrial applications and can be configured to efficiently process a wide range of materials.

Our machines are developed to the highest standard using state of the art technology, ensuring you have a machine that is reliable and efficient.

The FS Series shredders are available in a wide range of sizes and configurations and can be customised to suit your required throughput and sizing.

We can also assist with the development of supply infeed, discharge and plant solutions to integrate with your shredder.

BENEFITS

- Multiple cutter designs
- Reliable & durable construction
- Low speed - low maintenance
- Suitable for processing multiple products
- Safe & easy operation
- Variety of screen sizes available

APPLICATIONS

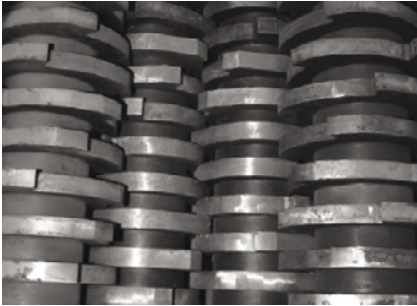
A wide variety of applications include:

- Secure Documents
- Circuit Boards
- Medical Waste
- Organic Waste
- Hard Plastics
- MSW/RDF
- Product Destruction
- Timber
- Bottles & Cans



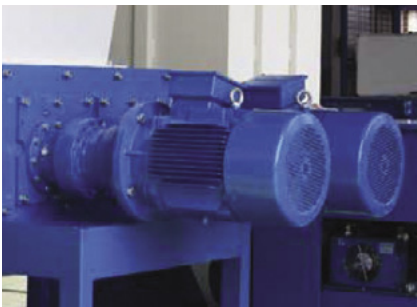
FEATURES THAT GUARANTEE HIGH PERFORMANCE

KEY FEATURES



Four-Shaft Design Innovation

The innovative design of the four-shaft shredder facilitates high throughput in a single pass. Being a low-speed shredder, this technology affords low noise, high torque and optimum efficiency.



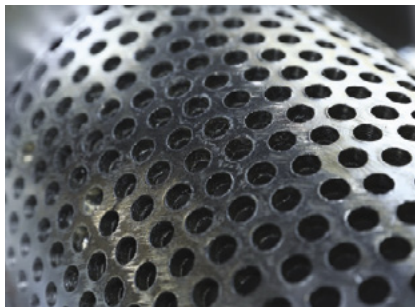
Automatic Cutter Protection

The smart cutter system identifies un-shreddable materials and automatically reverse cycles the shredder to clear any potential product jamming and allows for easy removal of the foreign objects. This also ensures self-protection of the shredder in the event that the shredder is over-fed.



Hook Variations

Special hook designs are available to suit different materials. Single hook to six or more hooks can be supplied to optimise the performance of the shredder for its designated task(s).



Sizing Screen

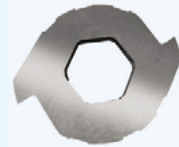
Screens are available in a wide range of sizes to suit individual requirements. Careful selection of shredder model is required when a specific output size is chosen as a reduction in the screen size will reduce the throughput performance of the shredder.

BLADE TYPES

The blade design and configuration can be specified to suit individual applications and optimise the durability and longevity of the cutting system. The correct selection of blades is essential to the correct performance of the shredder.



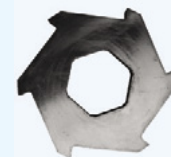
Single-hook Blade



Two-hook Blade



Four-hook Blade



Six-hook Blade



Chain Shape Blade



Assembly Blade



SPECIFICATIONS

Model Item	Dimension L/W/H (mm)	Cutting Chamber L/W (mm)	Cutter Thickness (mm)	Number of Cutters (pcs)	Main Motor Power (kw)	Weight (kg)
FS6650	1400 x 910 x 1800	660 x 500	18.5	26	7.5kW	1000Kg
FS8040	1860 x 1200 x 2065	800 x 400	18.5	20	2 x 11kW	1600Kg
FS8060	1950 x 1200 x 2065	800 x 600	18.5	30	2 x 11kW	1800Kg
FS8080	2180 x 1200 x 2065	800 x 800	18.5	42	2 x 11kW	2000Kg
FS10080	2410 x 1400 x 2730	1000 x 800	40	21	2 x 18.5kW	5000Kg
FS100100	2610 x 1400 x 2730	1000 x 1000	40	26	2 x 18.5kW	5500Kg
FS100120	2810 x 1400 x 2730	1000 x 1200	40	31	2 x 22kW	6000Kg
FS100140	3010 x 1400 x 2730	1000 x 1400	40	36	2x 22kW	6500Kg
FS130100	3200 x 1650 x 2930	1300 x 1000	50	20	2 x 15kW + 2 x 22kW	11500Kg
FS130120	3400 x 1650 x 2930	1300 x 1200	50	24	2 x 15kW + 2 x 30kW	12500Kg
FS130140	3600 x 1650 x 2930	1300 x 1400	50	28	2 x 15kW + 2 x 30kW	13500Kg
FS160140	4160 x 2200 x 3630	1600 x 1400	50	28	2 x 30kW + 2 x 45kW	17000Kg
FS160160	4360 x 2200 x 3630	1600 x 1600	50	32	2 x 30kW + 2 x 45kW	18000Kg
FS160200	4560 x 2200 x 3630	1600 x 2000	50	36	2 x 30kW + 2 x 55kW	19000Kg

*Please note: Specifications are indicative only and may be subject to change without notice. Equipment is sold with an operation manual and risk assessments relating to the equipment as supplied. It is the responsibility of the purchaser to conduct their own assessments and determine the suitability of the equipment for the intended use. Other models and custom builds available on request.

