



Dimensions

Height	2 720 mm
Width	3 255 mm
Length	4 415 mm
Approx Weight	10 000 kg
Motor Power	2 x 75 kW
Main Shaft Speed	75 r/min
Rotor-knive	114 +4 pcs

Cutting Chamber

Length	2 000 mm
Width	1 450 mm

Features

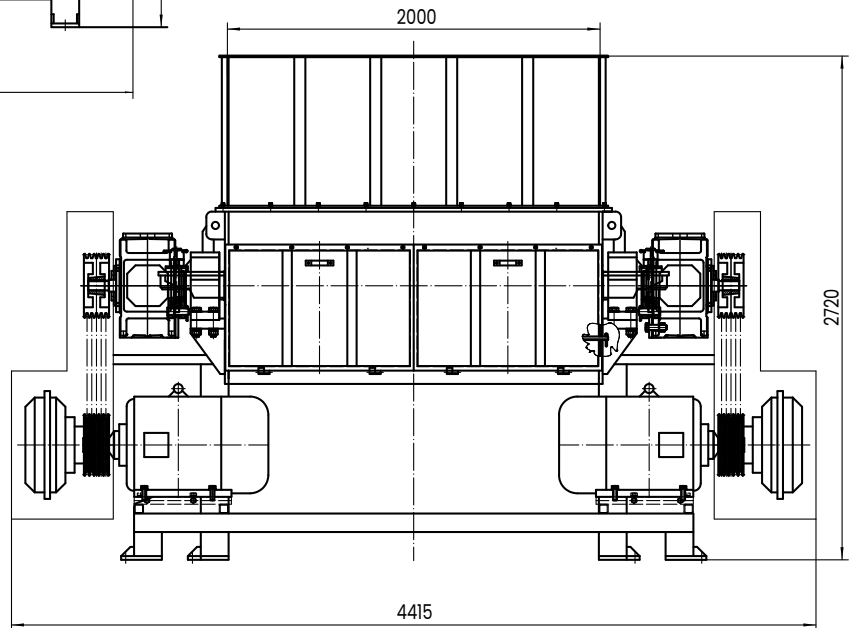
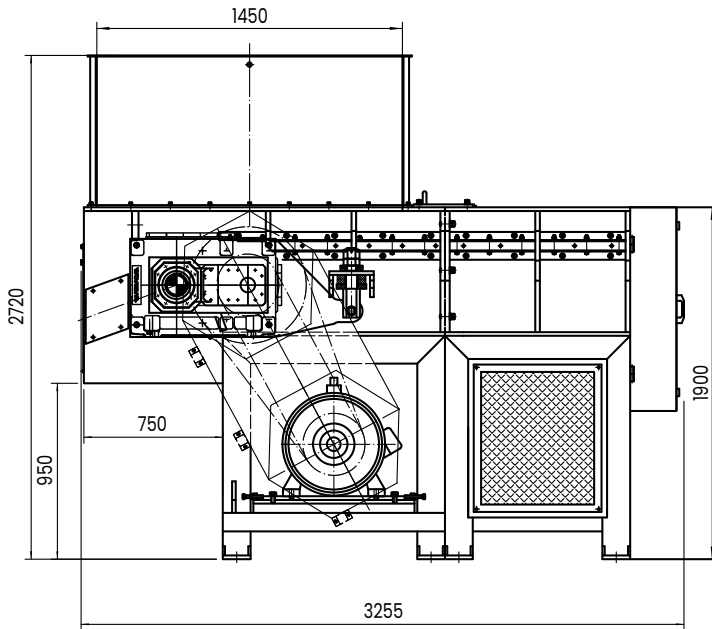
- Hardened steel rotor knives
- Integrated shock absorbers
- Material sizing screens
- Built in hydraulic power pack
- Suitable for cardboard, plastic, paper, timber, cans, light metal products, mattress springs, tyres up to 4 x 4
- Auto Reverse Protection
- Easy Maintenance
- Reliable & Durable Construction
- Generous Loading Aperture

Optional Extras

- Film Rotor
- Additional Swinging Arm Feed
- Hard Material Rotor
- Custom Hopper Designs
- In-Feed and Out Feed Conveyors



Dimensions and technical information without obligation. Subject to change.



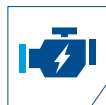
Size Comparison



Shaft Speed
74 (r/min)



Rotor Knife
114 +4 (pcs)



Motor
2 x 75 kW



Waste Types
cardboard, plastic,
paper, timber, cans, light
metal products, mattress
springs, tyres up to 4 x 4

