

**Barclay Primary Shredders**, effortlessly shear high volumes of scrap tyres into strips in seconds. These Primary Shredders handle tyres up to 72" in diameter, available in side-load, 45° angle and top-load configurations, and produce strips from the popular 4.9" (124 mm) to 10" (254 mm) wide.

### Features

- Couplers with shear pins designed for bulk loading to protect the drive train.
- Continuously rotating strippers that clear debris to prevent blockages.
- Chain-driven feeding rollers with torque limiting clutch.
- 75 hp motor and gearbox with shear pin protection.
- Easy-to-use controls with emergency stop button.
- Durable Cru-wear tool steel knives that last up to 10,000 ton throughput, optional
- Ready for quick connection Fully wired, simple controls, large emergency stop button.

### Options

- Through-feed (side load), 45° angle or top-load configurations.
- Cut spacing from 4.9" sizing to 10".
- Optional in-feed and out-feed conveyors.
- Add-on classifier and secondary shredder for a complete tyre TDF 150 mm shredding system.



4.9 Primary through feed shown with conveyor

### Specifications

<b>Weight</b>	11.8 T
---------------	--------

<b>Motor</b>	
<b>Type</b>	Electric Gearmotor
<b>Model</b>	SEW Eurodrive
<b>Power</b>	75 HP, 100 HP
<b>Voltage</b>	460 V - 480 V
<b>Frequency</b>	50 Hz - 60 Hz
<b>Phase</b>	3 Phase

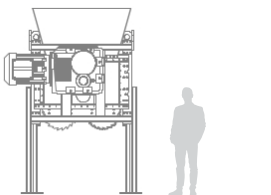
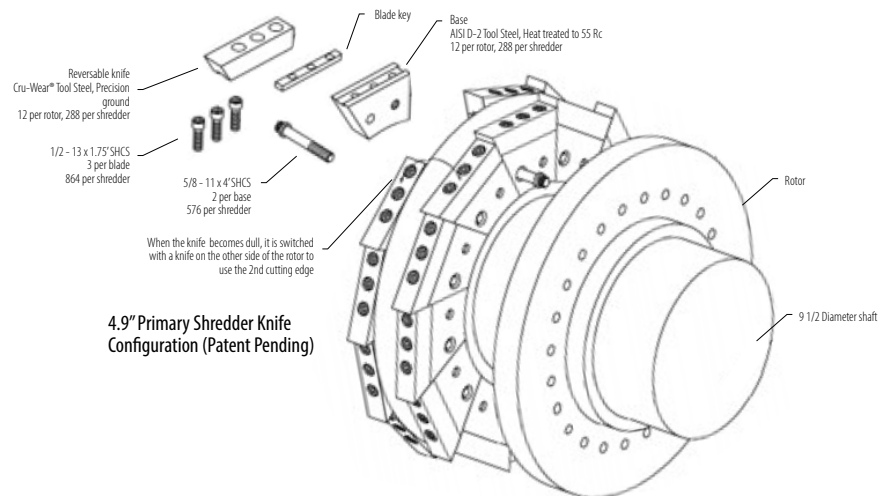
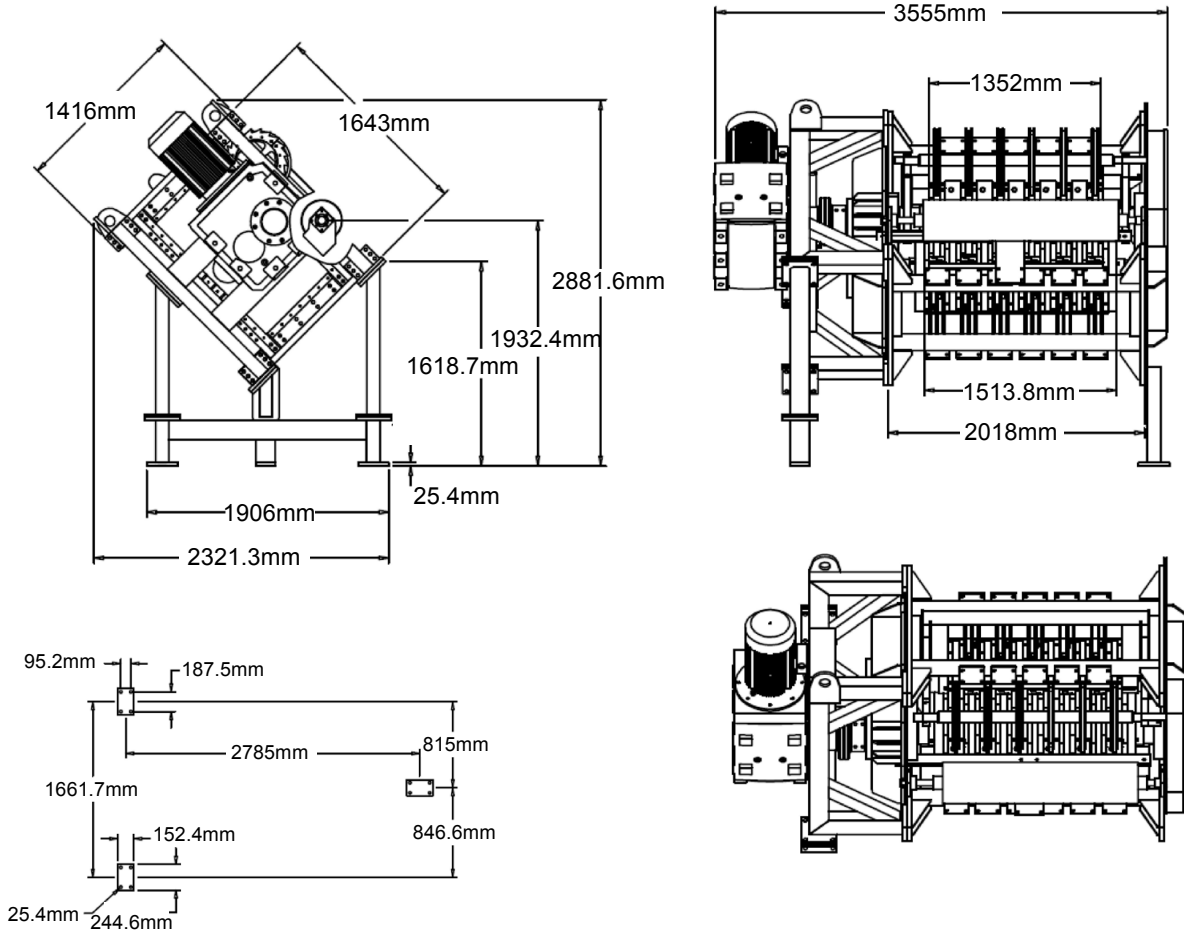
<b>Shaft</b>	
<b>Diameter</b>	9.5"
<b>RPM</b>	9 - 11
<b>Orientation</b>	Side, 45° angle or Top load

<b>Cutting Chamber</b>	
<b>Width</b>	72" (1828 mm)
<b>Spacing</b>	4.9" - 10" (124-254 mm)
<b>Cuts</b>	12
<b>No. of Knives (Cru-wear steel)</b>	288
<b>Thickness</b>	1.50" (38 mm) Optional 50% 1.4" & 50% 1.5"

<b>Capacity</b>	
<b>Tyres diameter</b>	up to 72" (1828 mm)
<b>Single pass throughput</b>	16-20 T p/Hr
<b>Re-feed throughput (150 mm chip)</b>	up to 12 T p/Hr



Schematic shown here is the 45 degree orientated design.



Size Comparison



- Shaft Type**  
2 Shaft Shredder
- Motor**  
75 HP 480V/60Hz
- Waste Types**  
Tyres

Dimensions and technical information without obligation. Subject to change.