



## Features

- Rail traverse system for compaction in several open containers in a row for continuous filling
- Compaction directly in open containers to a length of 7m
- Removal weights of up to 10 tons of compacted pallets in a 35m<sup>3</sup> container
- High compaction ratio of 3:1 optimising transport payloads
- Suitable for a range of waste material
- Easy & safe to operate
- Robust design & build - engineered for long life and optimum performance
- Hydraulic drum lift
- Automatic or manual operation

## Optional Extras

- Special-purpose compaction head
- Central lubrication system
- Remote control
- Extension set for additional containers
- Extended Height and length clearance for larger containers
- Special hydraulic unit for increase of rolling speed

## Roll Packer Specifications

Height	6 600 mm
Width	6 969 mm (2 bin positions)
Length	5 098 mm
Drum Roller Width	1 800 mm
Drum Roller Weight	1 500 Kg
Drum Roller Speed	6 rpm
Weight	4 200 kg

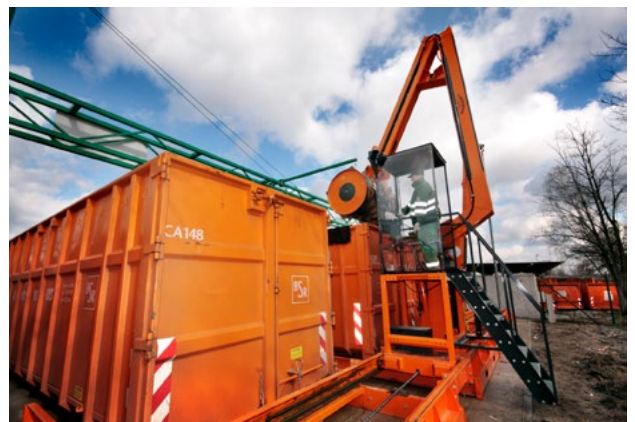
## Power

Power Supply	415v, 3 phase, 32amp
Motor	5.5 kW / 50 Hz
Minimum CR	4:1

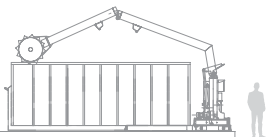
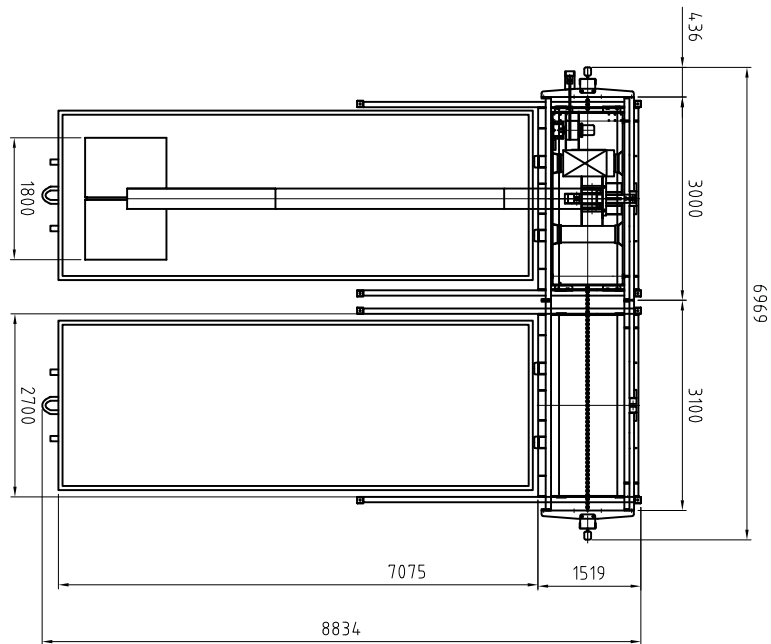
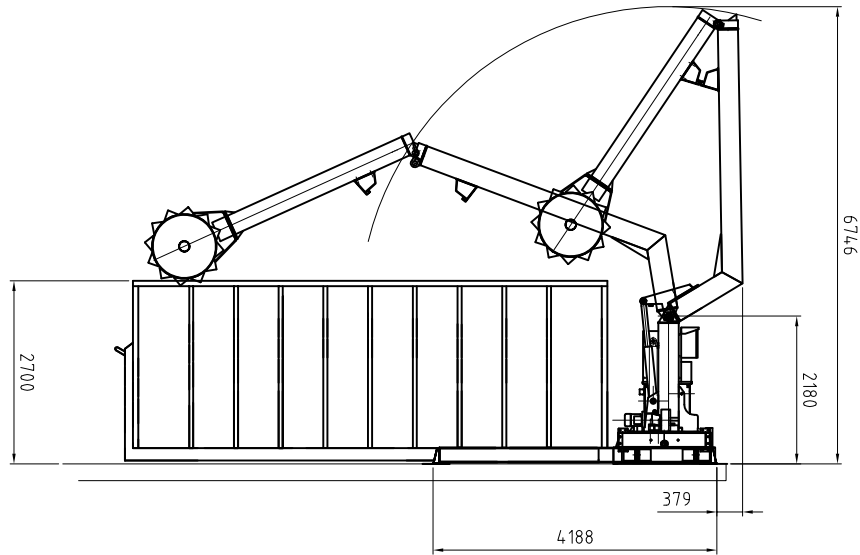
## Max. Container Size

Length	7 000 mm
Height	2 700 mm
Optional Height	3 100 mm

[More product info on our website >>](#)



Dimensions and technical information without obligation. Subject to change.



Size Comparison



A compaction drum that rolls forward and backward



Approx Weight  
4.2 T



Motor  
5.5 kW, 3 Phase



Approx Weight  
Drum Roller  
1.5 T

