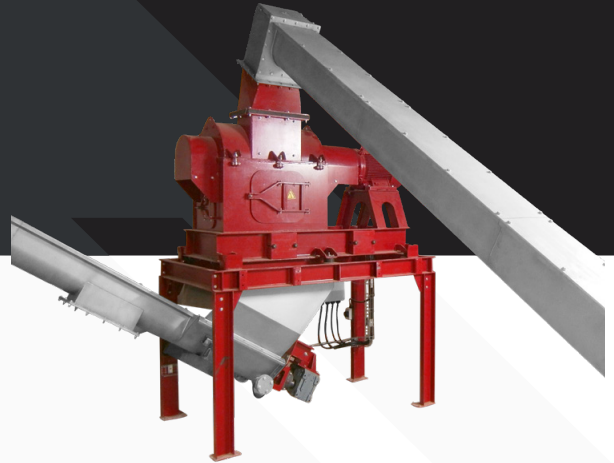


The Martinater 700 is a highly efficient machine designed to grind a variety of food products suitable for recycling and/or biogas additives. It is perfect for use in shops and restaurants, as well as other food-related industries. With its powerful motor and durable construction, the Martinater 700 is able to process large quantities of food waste quickly and easily.

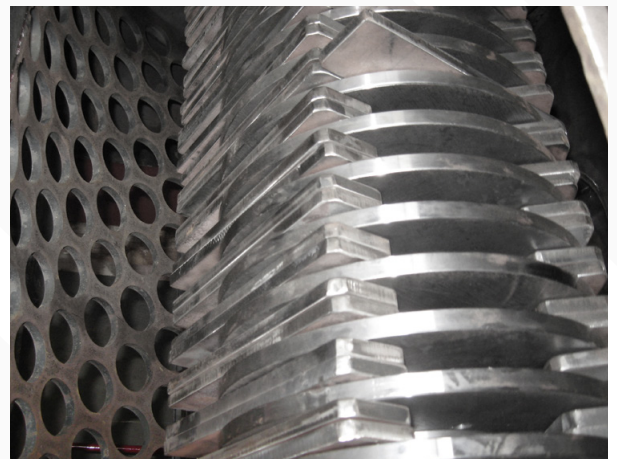


Features

- Compact size
- Heavy duty construction
- Low maintenance design
- More than 99.5% clean organic material
- Quick opening doors for easy cleaning
- Bolt free screen exchange
- Low installed power
- Stainless steel isolated splash shields for low noise operation
- Electrical Control Panel

Options

- Variety of screen sizes
- Bin tipper or conveyor infeed options
- Discharge stockpiling conveyors
- Subframe for direct discharge to bins
- Water sprayers for wet processing
- Liquid catchment tank
- Organic discharge pump



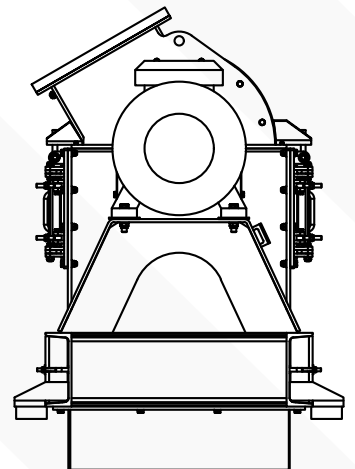
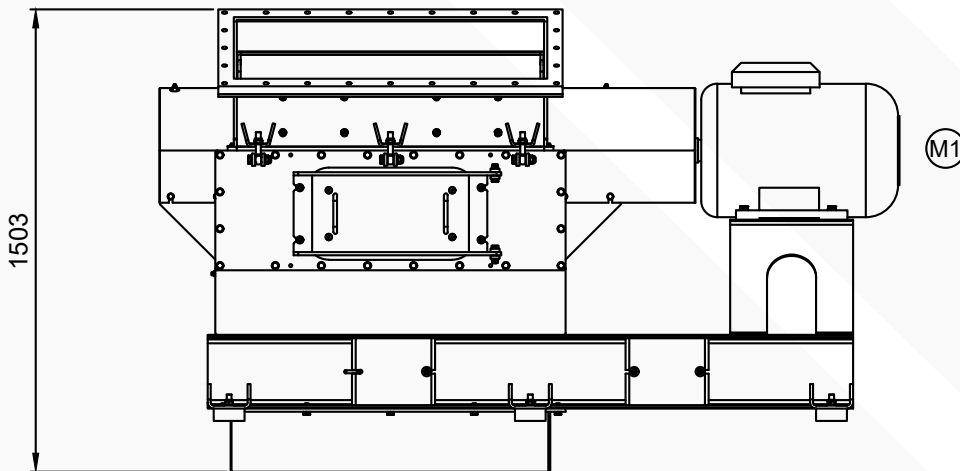
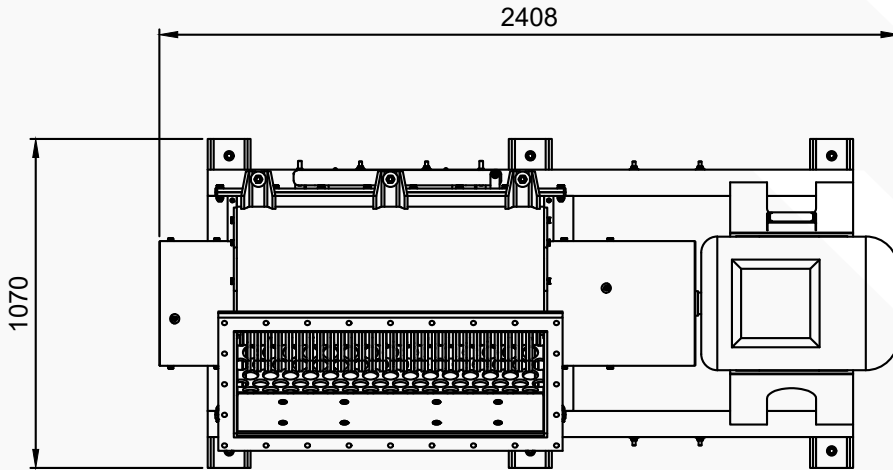
Input



Output

MODEL	700
Weight	1 600 Kg
MOTOR	
Power	37 - 45 kW
DIMENSIONS	
Width	1 070 mm
Height	1 503 mm
Length	2 408 mm
Feed opening	1 000 mm x 380 mm
CAPACITY	
Throughput*	7.5 - 20 m ³ /hr

** depending on material*



Approx Weight
1600 Kg



Motor
37-45 kW



Waste Types
Packaged food
product, Agricultural
food waste